

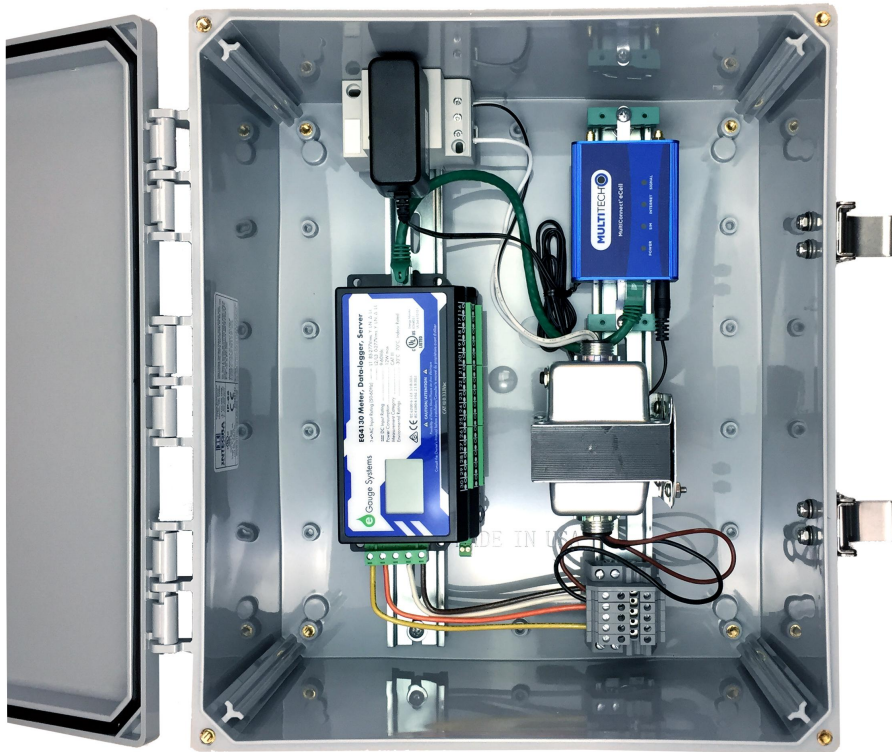
Powered Enclosure Kit (277/480VAC)

[Visit the online store page](#)

SKU: PEK-277/PEK-277-XL

The Powered Enclosure Kit is designed for installation of the eGauge Meter on a 277/480V service where 120V is needed for third party hardware.

The kit comes with components that complement the eGauge main unit, decreasing installation time and reducing complexity. Compatible with 277/480V. Includes 277V:120V step-down transformer for powering 120V accessories.



Hardware included

Contains (unassembled):

- NEMA 4X polycarbonate enclosure, hinged, lockable
 - Regular: 14 in. x 12 in. x 6 in.
 - Extra Large: 16 in. x 14 in. x 7 in.
- DIN Power distribution block
 - 1x 120V power plug receptacle
 - 1x Terminal cover plate
 - 2x Terminal endstops
 - 5x Terminal blocks
- Wire set (15' each; black, red, blue, white)
- [eGauge Mounting Kit](#)
 - 3x 6-32 x 3/16" Pan Head Machine Screws
 - 4x Silver Screws (for connecting eGauge meter to DIN clip or L-bracket)
 - EG4xxx DIN clip
 - EG4xxx L-bracket
- 2x DIN rail lengths
- Potential Transformer with DIN rail mounting clip
- Mounting plate for transformer

Assembly/installation information

[277V Powered Enclosure Kit installation guide](#)

Documents

Regular: [14"x12"x6" Enclosure spec sheet](#)

Extra large: [16"x14"x7" Enclosure spec sheet](#)

Related Information

- [Product Page: Hinged Enclosure](#)
- [Product Page: Powered Enclosure Kit \(120/240VAC, 120/208VAC\)](#)
- [Product Page: DIN Rail Mounting Kit](#)

Please visit kb.egauge.net for the most up-to-date documentation.