

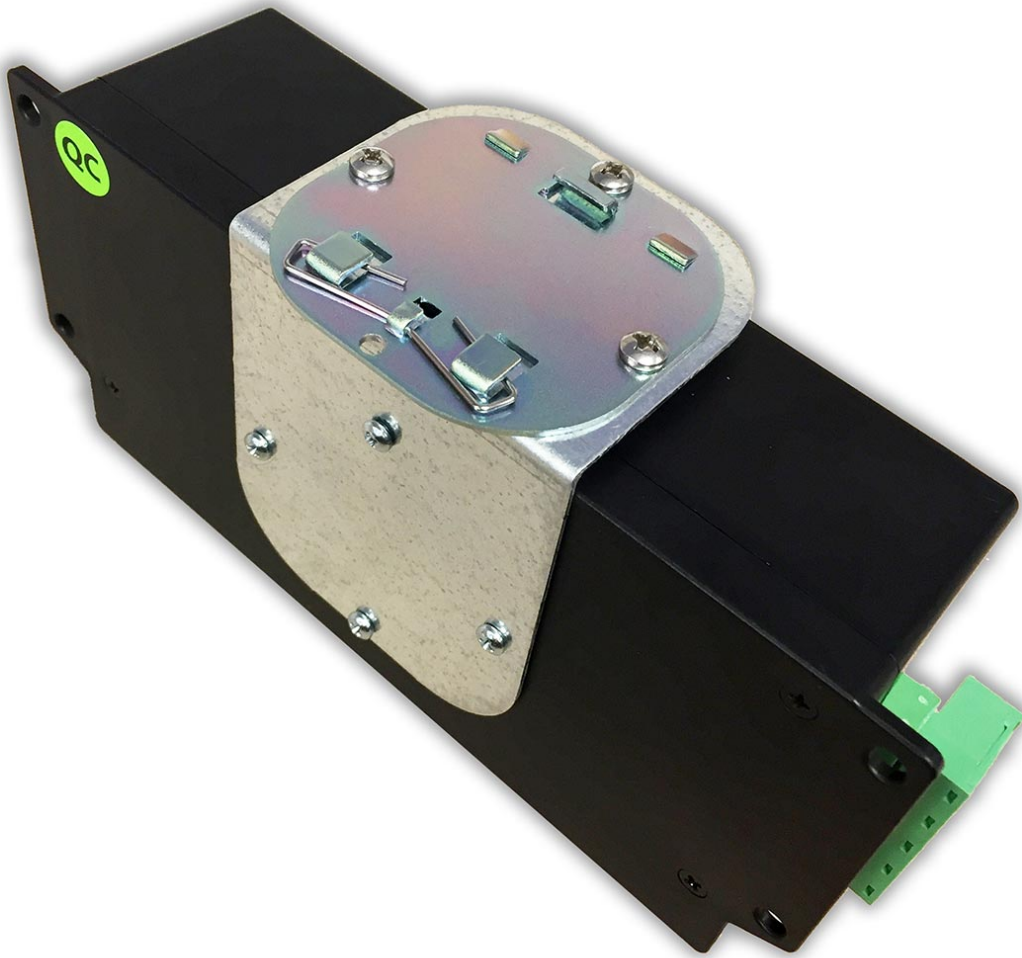
DIN Rail Mounting Kit

[Visit the online store page](#)

SKU: EGMK

The DIN Rail Mounting Kit is used to attach the eGauge Core or Pro to a piece of DIN rail or another surface. The kit comes with one DIN clip that is screwed directly into the meter, one L-bracket for using the DIN clip at a 90-degree angle to the mounting surface, and all necessary screws to connect each piece.

Make sure to only use the included machine screws for mounting the DIN clip or bracket to the eGauge. Other screws could be too long and damage the meter.



eGauge Mounting Kit

Hardware included

- 3x 6-32 x 3/16" Pan Head Machine Screws
- 4x Silver Screws (for connecting eGauge meter to DIN clip or L-bracket)
- EG4xxx DIN clip
- EG4xxx L-bracket

Assembly/installation information

[DIN Rail Mounting Kit video](#)

Software configuration Information

Depending on the orientation the eGauge is installed, the LCD menu can be rotated using the LCD menu button to navigate to Settings -> Display -> Orientation. Orientation can be set to “normal”, “counter clock-wise”, “upside-down”, or “clockwise”. [See LCD manual for LCD information](#)

Related Information

- [Product Page: Hinged Enclosure](#)
- [Product Page: 120/208V and 120/240V Powered Enclosure Kit](#)
- [Product Page: 277/480V Powered Enclosure Kit](#)
- [L Bracket STEP file](#)
- [DIN clip STEP file](#)

Please visit kb.egauge.net for the most up-to-date documentation.